



---

# COASTEEL ENGINEERING

*Capability Statement*

# about

**Coasteel's reputation is built on quality workmanship, as well as its professional and friendly service**

Coasteel Engineering is the leading fabricator and supplier of structural steel on the Sunshine Coast. Coasteel's reputation is built on quality workmanship, as well as its professional and friendly service. The Company has been operating on the Sunshine Coast for over 30 years and is the preferred manufacturer and supplier for many developers, builders and government agencies. The expert team is dedicated to providing its services on time and within budget.

The business, originally established in 1988 under a different name, was purchased by the current owners, Dave Slatter and Jen McIntyre in 2016. In a few short years, Dave and Jen doubled the size of the business, rebranded it to 'Coasteel Engineering' to suit the Sunshine Coast, and purpose-built a factory with modern facilities to accommodate the fast growing business. Their vision to deliver a high-quality product with outstanding customer service has seen Coasteel Engineering develop into the leading structural steel fabrication business it is today.



# services

Coasteel Engineering fabricates and installs structural steel solutions for commercial, industrial, residential, government and custom design projects. The team boasts qualified and experienced project managers, tradesman boilermakers, draftsmen, estimators and professional administration staff. Coasteel also engages highly experienced steel detailers, licensed riggers and crane drivers to assist in the provision of its services. The professional team are specialists in their field and work closely together to ensure the smooth delivery of each and every project.

Coasteel Engineering is an all-in-one steel fabricator offering a range of services including:

- Fabrication of structural steel
- General metal work
- Stair stringers
- Balustrading and awnings
- Onsite welding and oxy cutting
- Surface treatments
- Estimating
- Drafting and detailing
- Delivery and installation
- Customised projects



# the team



## DAVE SLATTER

**Managing Director - Owner**

Dave brings over 40 years experience in the steel fabrication and construction industry, and 20 years of experience managing structural steel fabrication businesses. Dave holds tradesman qualifications as a Coach and Motor Body Builder and Boilermaker, as well as higher educational qualifications in Business Management and Frontline Management.

Contact Dave about: Large projects, estimating and quoting  
[dave@coasteelengineering.com.au](mailto:dave@coasteelengineering.com.au)



## JEN MCINTYRE

**Business Manager - Owner**

Jen has overseen the operations of Coasteel Engineering since purchasing the business in 2016. Jen has had 30 years experience as a Project Manager in the Construction and Education sectors. Jen was a finalist in the 2021 SCBWN Corporate Business Woman Awards.

Contact Jen about: Finance and business opportunities  
[jen@coasteelengineering.com.au](mailto:jen@coasteelengineering.com.au)



## JADE SLATTER

**Legal Counsel**

Jade completed her Bachelor of Laws (First Class Honors) at the Queensland University of Technology in 2017 and was admitted as a solicitor to the Supreme Court of Queensland. Jade is responsible for contract administration, assisting with estimating on larger projects, overseeing employment law and human resource matters.

Contact Jade about: Contracts, compliance, projects and HR  
[jade@coasteelengineering.com.au](mailto:jade@coasteelengineering.com.au)



## JARROD SLATTER

**Project Manager & Estimator**

Jarrod graduated from the University of the Sunshine Coast in 2015 with Honours in Civil Engineering, Majoring in Construction Management and a Minor in Environmental Engineering. Jarrod is responsible for project management, estimating and implementing robotics and other automation technologies.

Contact Jarrod about: Small-medium projects, estimating, quoting, robotics and automation  
[jarrod@coasteelengineering.com.au](mailto:jarrod@coasteelengineering.com.au)



## DARREN PRENTIS

**Steel Detailer - Boilermaker**

Darren is a qualified Boilermaker with over 15 years of experience and is our in-house steel detailer. Darren is responsible for creating workshop drawings for fabrication purposes. He is also able to assist with fabrication and site work when available.

Contact Darren about: Small-medium job steel detailing and WHS  
[darren@coasteelengineering.com.au](mailto:darren@coasteelengineering.com.au)



## ALANA LUCARELLI

**Accounts Manager**

Alana is our business's first point of contact and has extraordinary customer service skills. Alana is our office magician who manages accounts, payroll, administration and assists the Project Team when required.

Contact Alana about: Accounts, all administration, HR and WHS  
[alana@coasteelengineering.com.au](mailto:alana@coasteelengineering.com.au)

# the facilities

## Coasteel Engineering operates out of a modern, purpose-built facility in the Sunshine Coast Industrial Business Park, Caloundra.

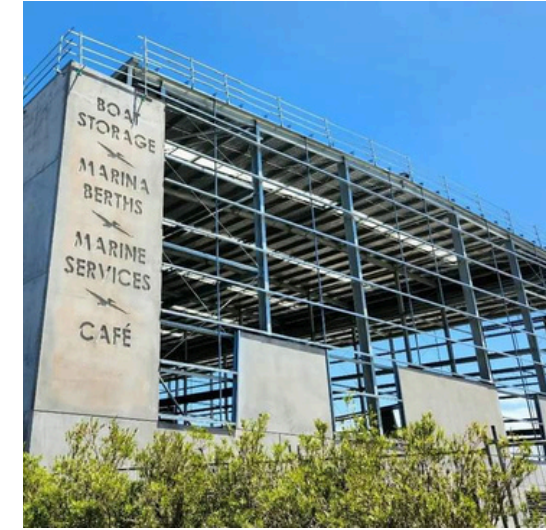
The facility, located close to the Bruce Highway, is comprised of a custom-designed workshop, professional office space and handstand storage area. The workshop boasts state-of-the-art facilities, including a Robotic Welder, CNC Beam Line, Spray Paint Booth and a 10-tonne overhead crane. Coasteel can cater for projects up to 300 tonnes, and workshop efficiencies are streamlined through automation and offsite processing.



### Plant & Equipment

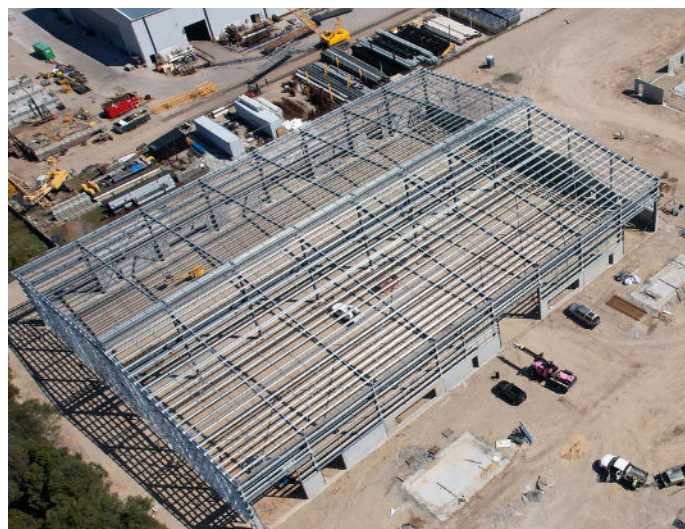
- Robotic Welder
- CNC Beam Line
- 10-tonne overhead crane
- External Spray Painting Booth
- 3.5-tonne workshop forklift
- 5-tonne workshop forklift
- 3-tonne site installation truck, fully equipped
- Mobile generator welder
- MIG and stick welders
- Semi-automatic bandsaws
- Hydraulic punch and shear machines
- Cold-cutting metal saw
- 19 FT electric scissorlift
- Hilux work utes, fully equipped

# industry sectors



## COMMERCIAL & INDUSTRIAL

Coasteel Engineering specialises in fabricating and installing structural steel for commercial and industrial projects, ranging from office, retail and unit developments, medical facilities, through to large tilt panel factories. Commercial and industrial projects comprise the majority of Coasteel's work, due to their known expertise in this niche market. Coasteel liaises directly with clients and engages highly experienced consultants to ensure project specifications and expectations are met.

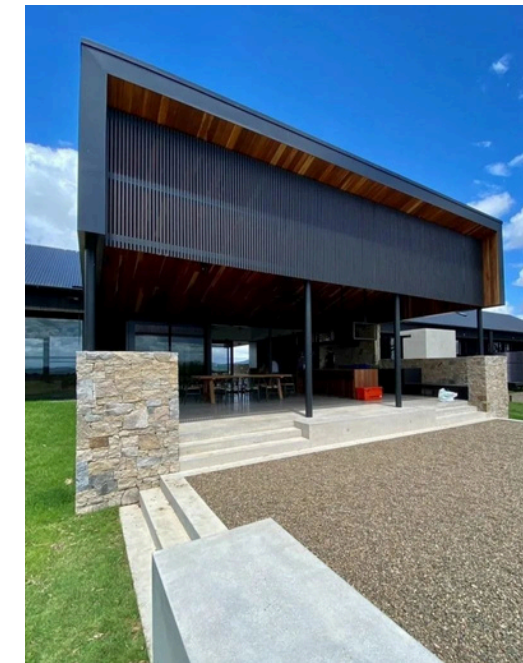
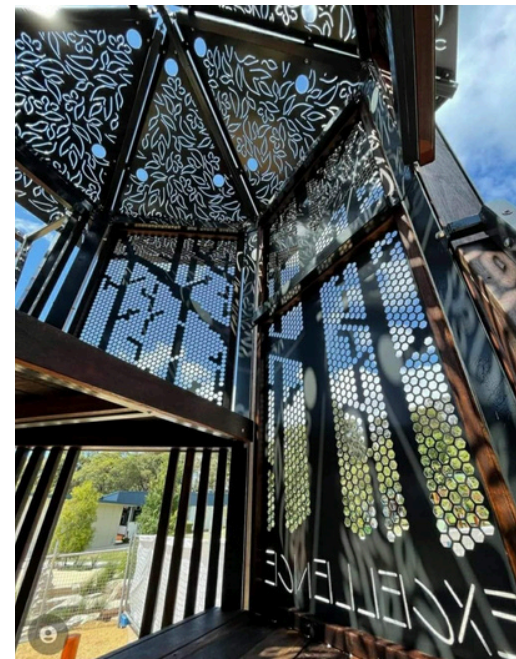
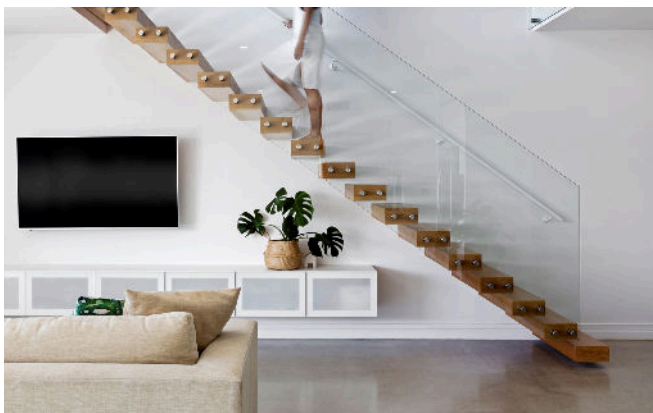


# industry sectors

## RESIDENTIAL

Building with steel for a residential project is a choice to work with a material that offers strength, sustainability and durability. Coasteel Engineering specialises in supplying high-quality structural and feature steel for residential builds. The team loves showcasing the potential design flexibility of steel, which can create stunning architectural flourishes not possible with timber. Whether the project is small or large in scale, the estimating team can offer a quote that works within any budget. The Coasteel team can also complete in-house drafting using its specialist 3D software to bring any project to life. Installation is offered as an additional service to reduce coordination challenges and streamline the process.

Coasteel Engineering has supplied the steel for several award-winning homes for residential builders on the Sunshine Coast.



## CUSTOM

Coasteel Engineering loves a challenge, especially when it involves its building medium of choice – Australian-made steel. No matter the size of the project, the estimating and drafting team can create custom steel fabrication services to bring ideas and concepts to life.

Some of Coasteel's common custom projects include shade/weather shelters for parks and sports fields, bridges, playground equipment, stair stringers and balustrades.

# project showcase



## COMMERCIAL & INDUSTRIAL

### Industrial Shed Paul Pryor Constructions on behalf of Moody Civil & Pipe

Coastal Engineering was proudly involved in the construction of a new industrial shed at Forest Glen for hosting earth machinery and equipment. This project involved the supply and fabrication of all structural steel for the main building, office, and wash-down area, as well as on-site installation. All external steel was hot dip galvanized for durability.

**Year: 2022**



# project showcase



## COMMERCIAL & INDUSTRIAL

### Malones Road Church ZD Build on behalf of Sunshine Coast Christian Fellowship

Coastal Engineering was proudly involved in the construction of the new church building at Eudlo Flats for the Sunshine Coast Christian Fellowship. This project involved detailing the structure using 3D computer modelling, supply and fabrication of all structural steel for the roof structure, and on-site installation. The team loved getting on site to take drone footage of this amazing structure during its installation.

**Year: 2021**

## RESIDENTIAL

### Modern Thai House Braeden Constructions

Coasteel Engineering are proud to have been involved in the construction of this Modern Thai House in Noosa Heads. Coasteel Engineering supplied the 3D modelling and detailing, as well as fabricated, and surface treated the feature roof steel of this amazing home.

The House won both the Master Builders Housing & Constructions Awards 2022: Sunshine Coast House of the Year, and Individual Home of the Year over \$2 million.

**Year: 2021 - 2022**

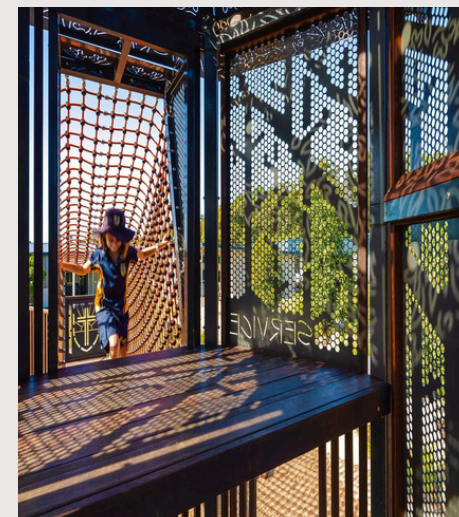
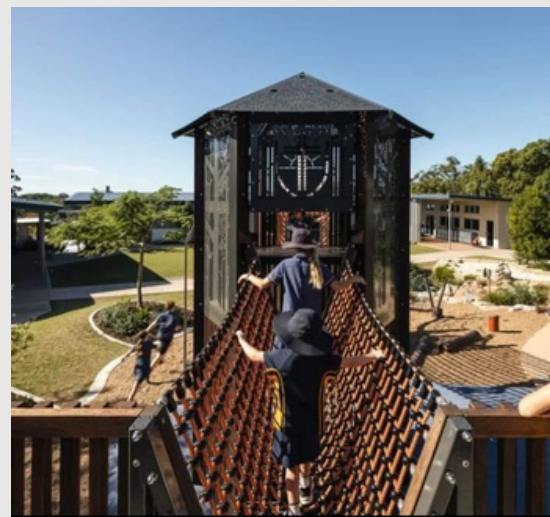


## CUSTOM

### Immanuel College Junior Playspace Harmony Landscapes

Coasteel Engineering loves to be involved in community and school projects, especially this award-winning playspace at Immanuel Lutheran College for Harmony Landscapes. Coasteel's involvement included the detailing of the two climbing structures using 3D cad modelling, and the supply and fabrication of structural steel columns, floor frames and roof frames, as well as on-site installation. All steelwork was hot dip galvanized and had 2-pac epoxy paint system applied.

**Year: 2021**



## RESIDENTIAL

### Glenmaurie Homestead Envisage Building

Coastal Engineering's involvement in this luxury homestead at Glenmaurie Station included the supply, fabrication and surface treatment of structural steel. Built on 75000 acres, this sublime and architectural masterpiece was a favourite amongst the team.

**Year: 2021 - 2022**



## CUSTOM

### Weather Shelters Eureka Landscaping

Coastal Engineering fabricated the weather shelters for the new Aura Sports Park in Nirimba. The steel was painted with 2-pac epoxy system for enhanced environmental durability.

**Year: 2020**

# vision & mission



**Dave and Jen’s vision for Coasteel Engineering is to provide a high-quality product with friendly and professional service, and to offer a workplace where its employees are respected and happy.**

Coasteel Engineering provides reliable and trusted steel fabrication services to its clients. The company stays current with the market trends and is continually improving its systems, undertaking industry-specific educational programs, workshop tours and attending relevant conferences.

Using leading technology and facilities, quality workmanship and outstanding customer service, Coasteel Engineering pledges to deliver a “on time and fit-the-first-time” product. This has resulted in many ‘repeat’ clients and strong relationships based on trust and deliverables.

## VALUES



### EXCELLENCE IN PRODUCT

Products supplied will meet Australian standards at all times, guaranteeing quality. The team's workmanship is second to none.



### EXCELLENCE IN SERVICE

Coasteel goes above and beyond expectations to provide its clients with outstanding levels of service.



### NO COMPROMISE ON SAFETY

Schedules, budgets and time pressures are not reasons for working unsafely. Coasteel ensures its workers are able to say 'no' to work they deem as unsafe.



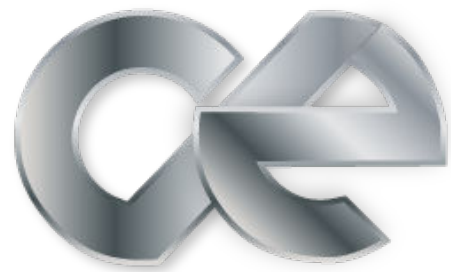
### A GOOD JOB FOR A FAIR PRICE

Coasteel aims to achieve a quality product within our clients' budget.



### HONESTY & INTEGRITY

Coasteel has an honest and straightforward approach in all its business dealings and maintains a high morale amongst its staff.



**COASTEEL  
ENGINEERING**

*Structural steel specialists*



@COASTEEL\_ENGINEERING



/COASTEELENGINEERING



/COMPANY/COASTEELENGINEERING

35-37 Claude Boyd Parade  
Corbould Park QLD 4551

[info@coasteelengineering.com.au](mailto:info@coasteelengineering.com.au)

[www.coasteelengineering.au](http://www.coasteelengineering.au)

ABN: 31 609 091 198

QBCC: 150 096 60

---